

# Dictatorship of Sensitivity

Marco Casagrande, [www.clab.fi](http://www.clab.fi) / Finland

06.03.2014 JETTY SYMPOSIUM

School of Arts and Cultures Newcastle University

ENVIRONMENTAL ART

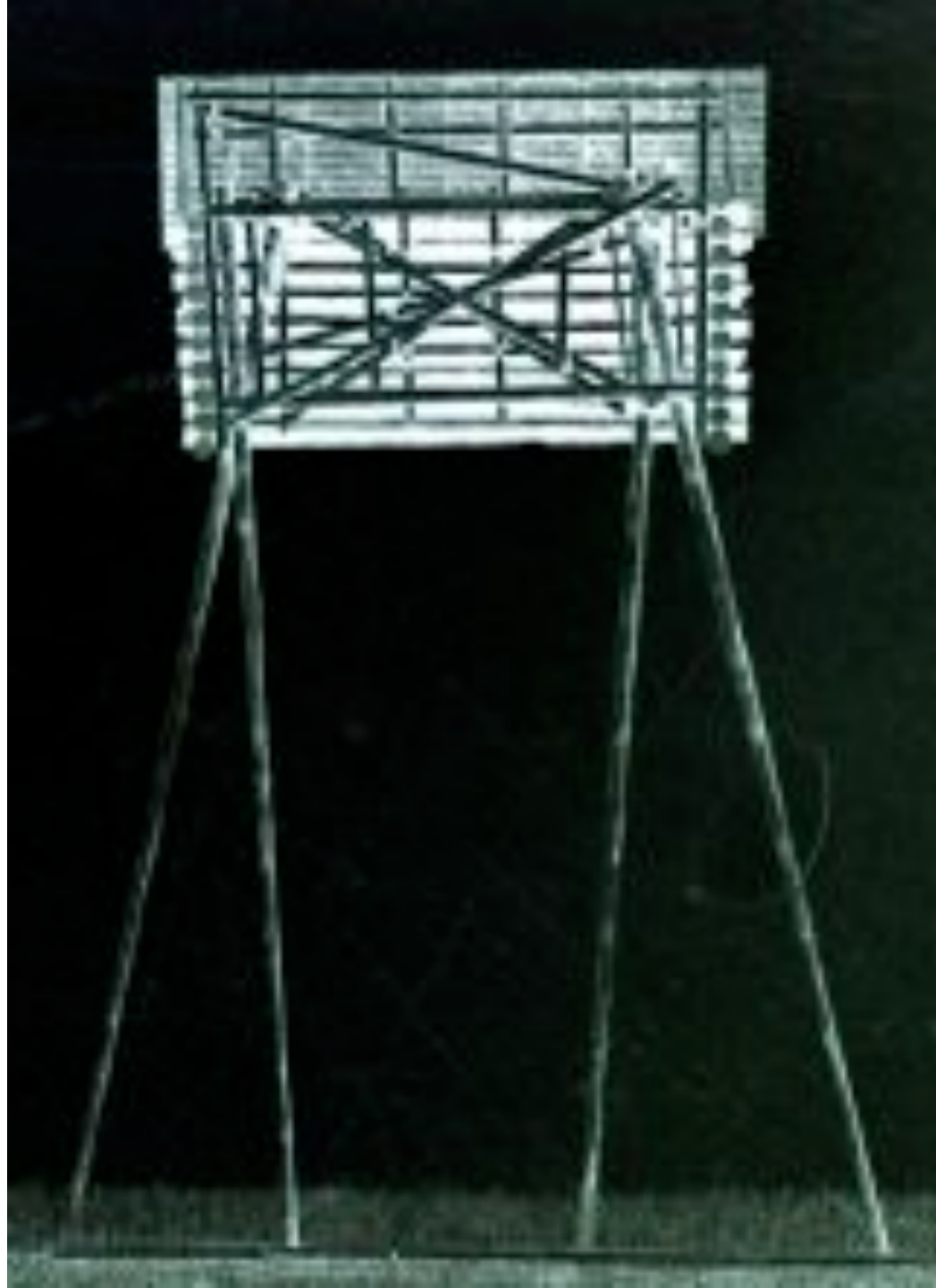
URBAN ACUPUNCTURE

INSECT ARCHITECTURE

















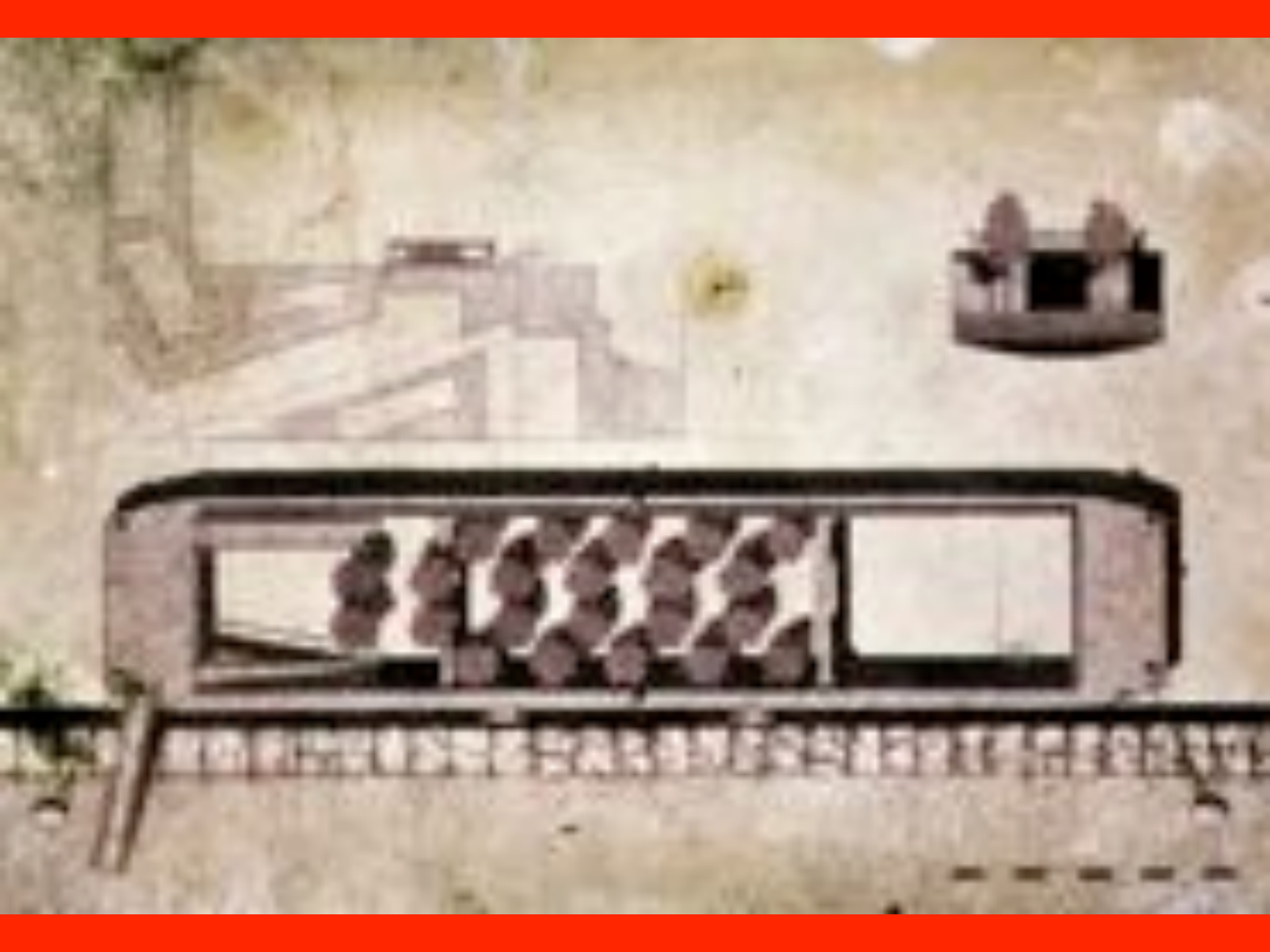






































































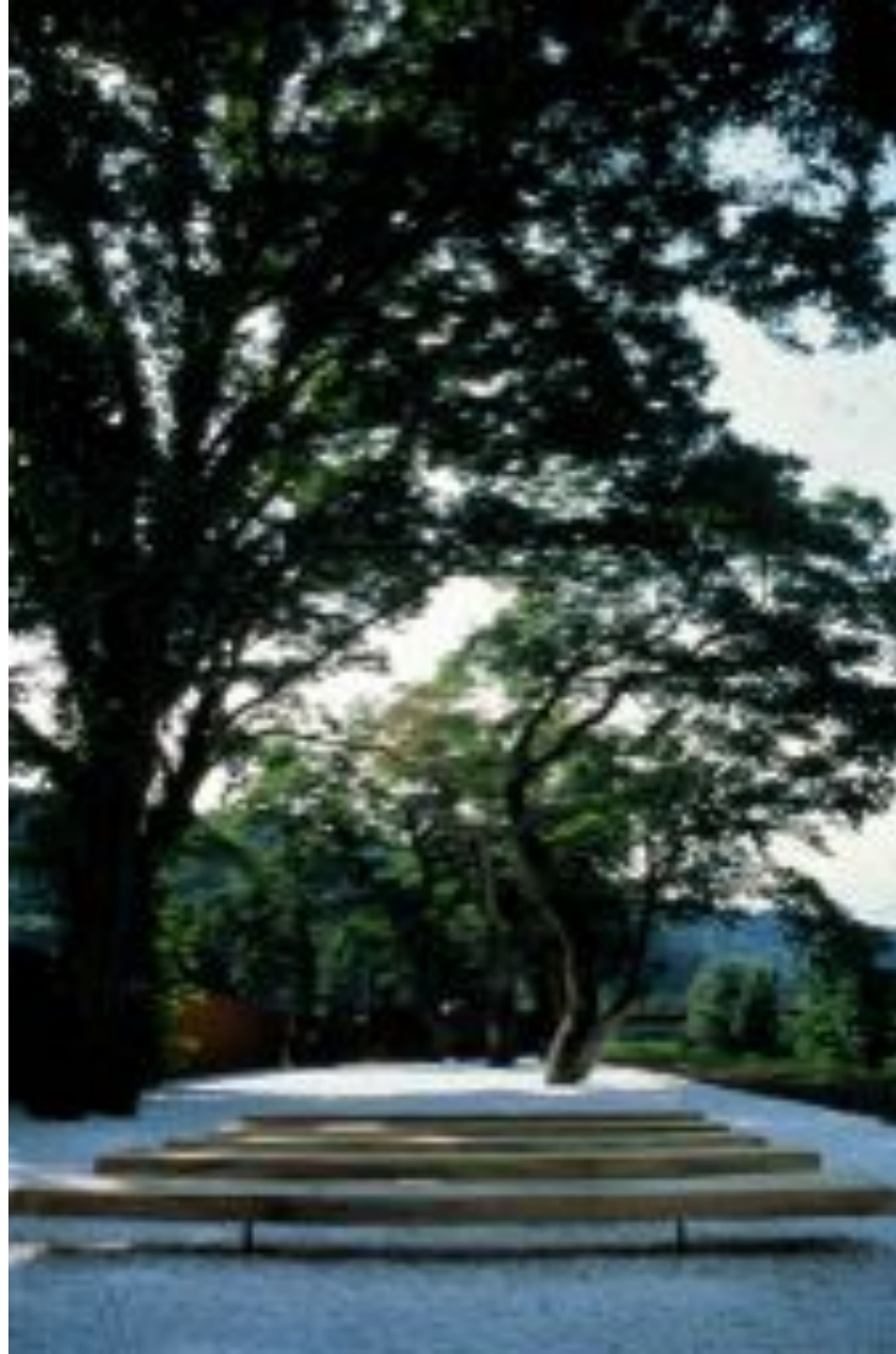


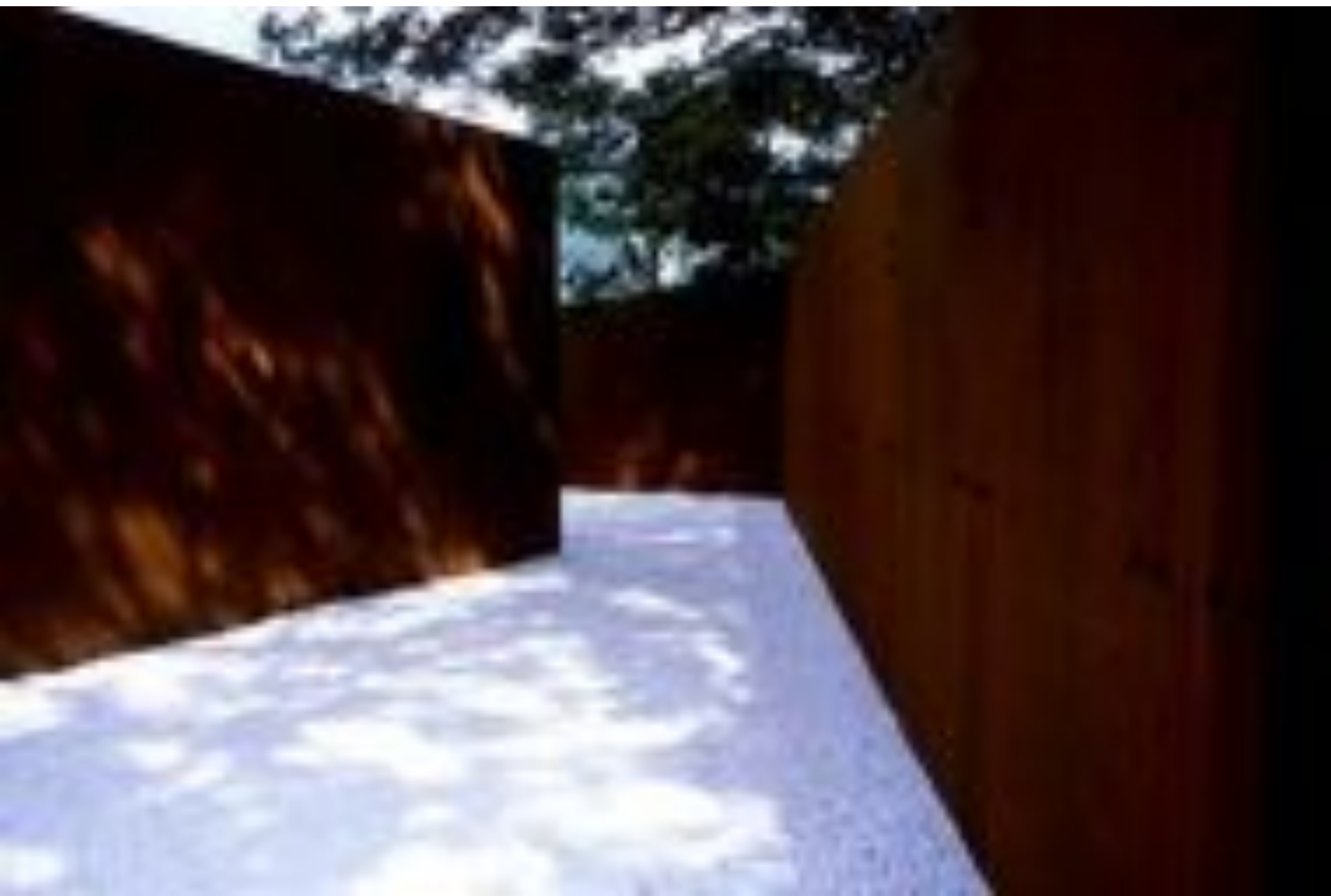




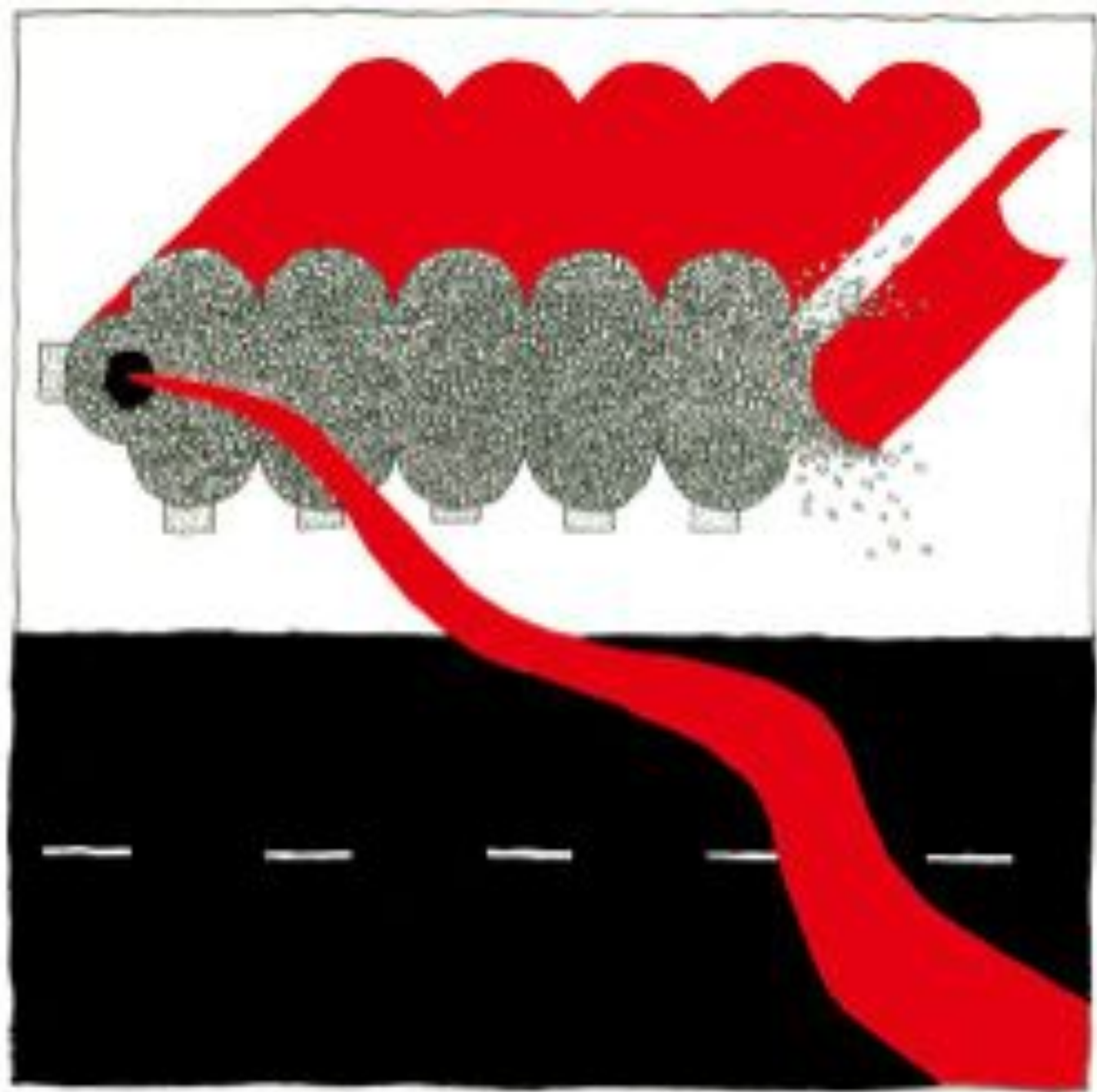
































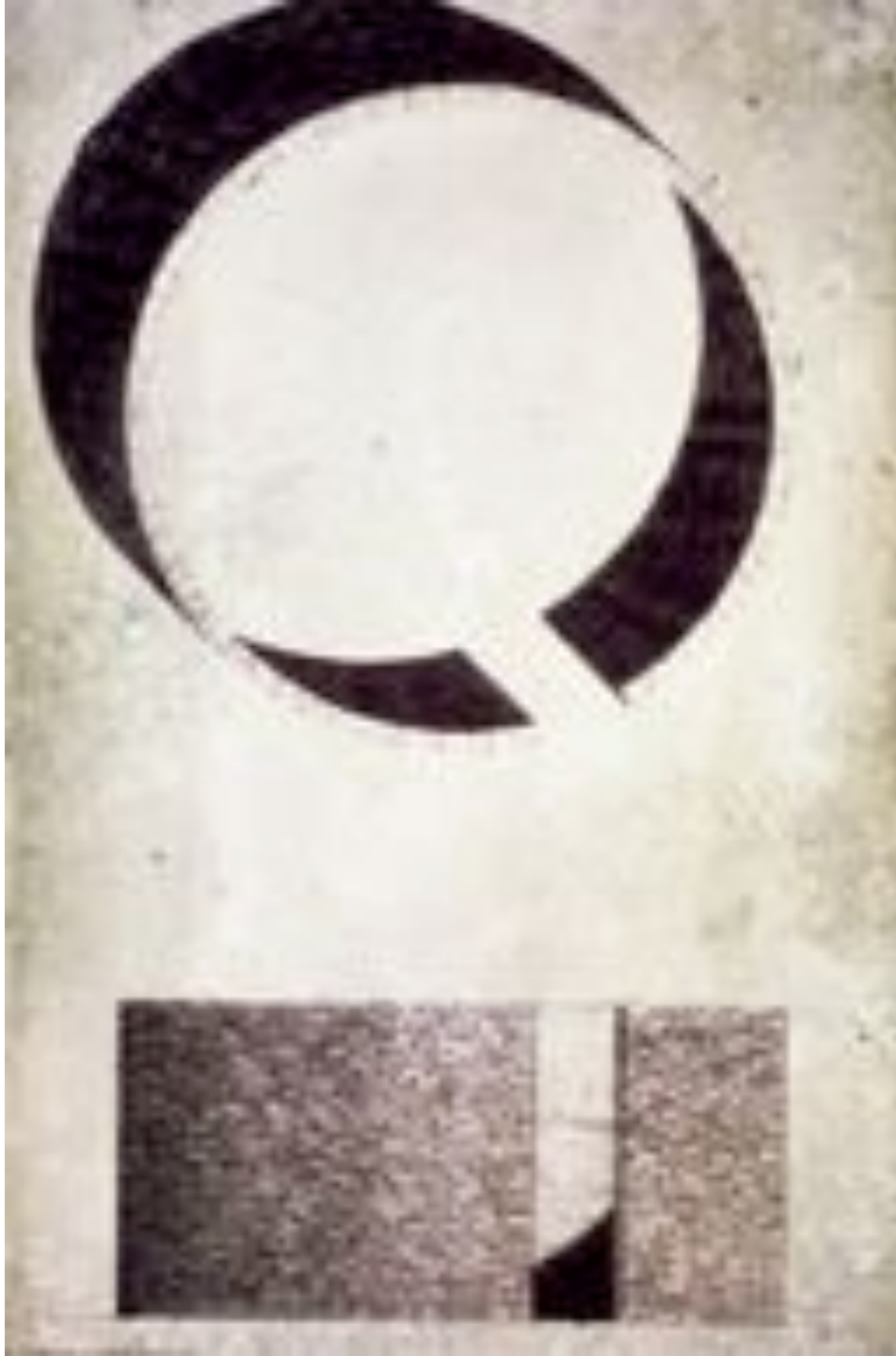








































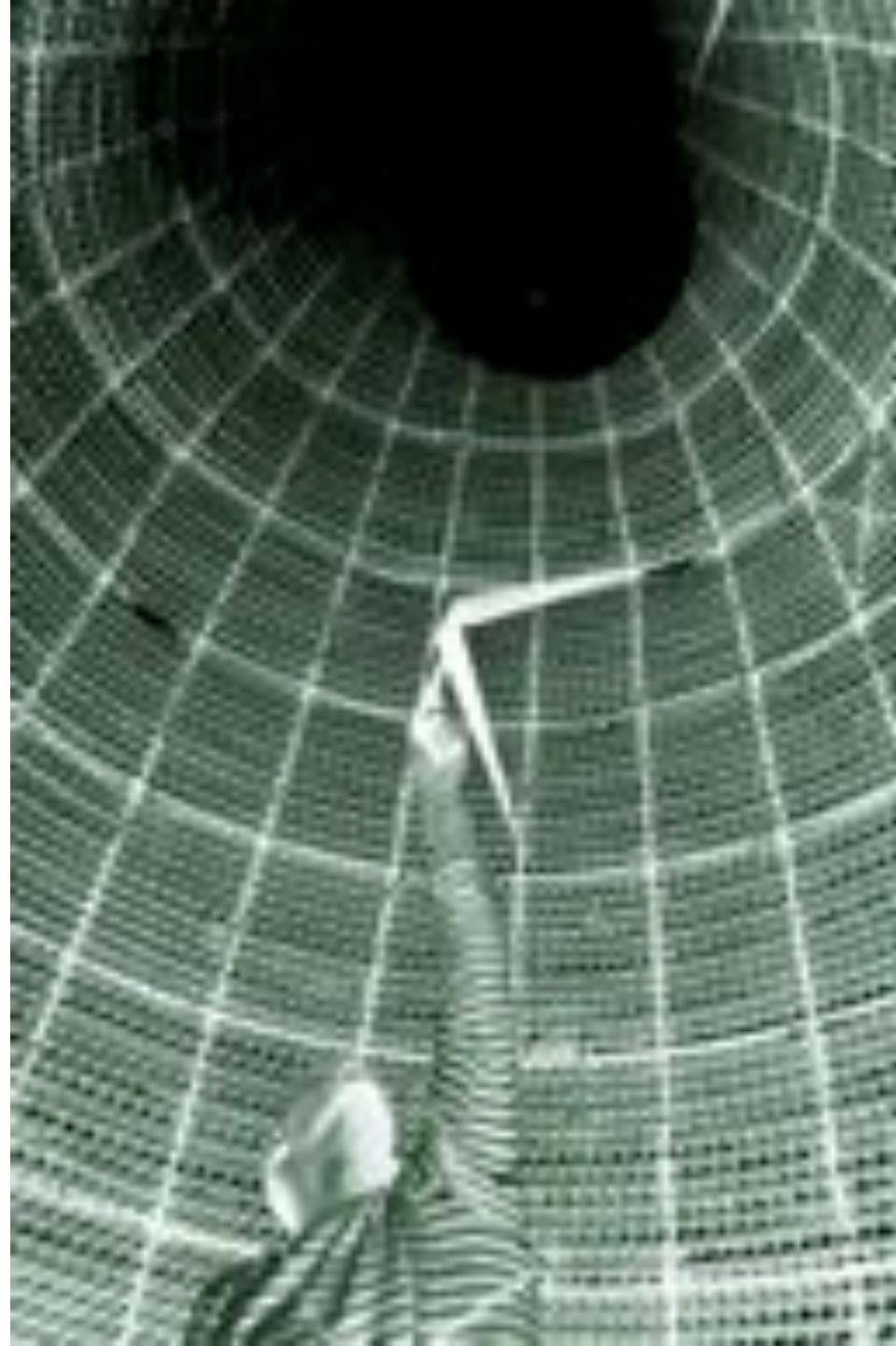






















































































東之亂  
赤報





# YES



DOGS



FISHING



PICNIC



DRAMA







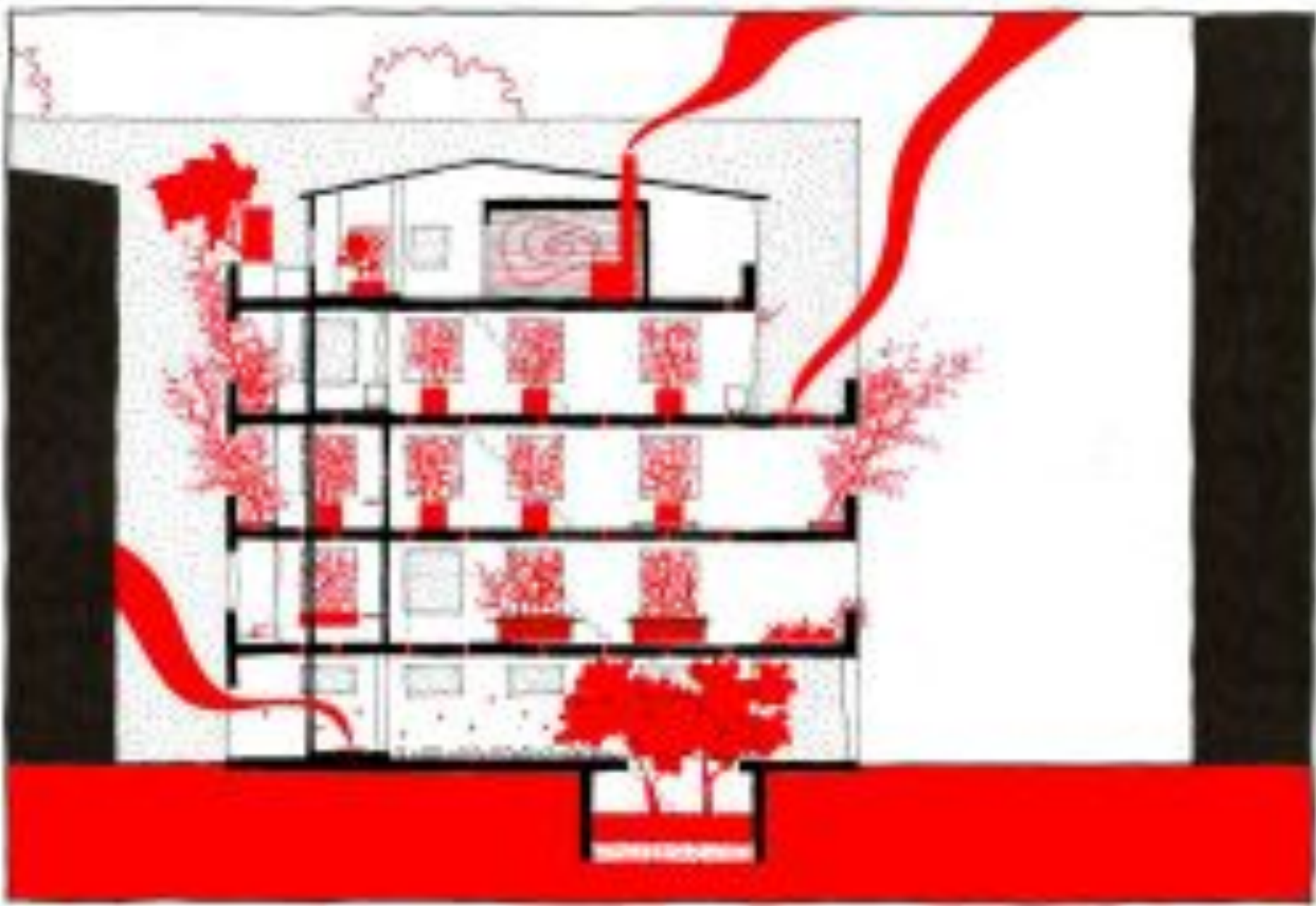
RUIN IS WHEN MAN-MADE HAS BECOME PART OF NATURE

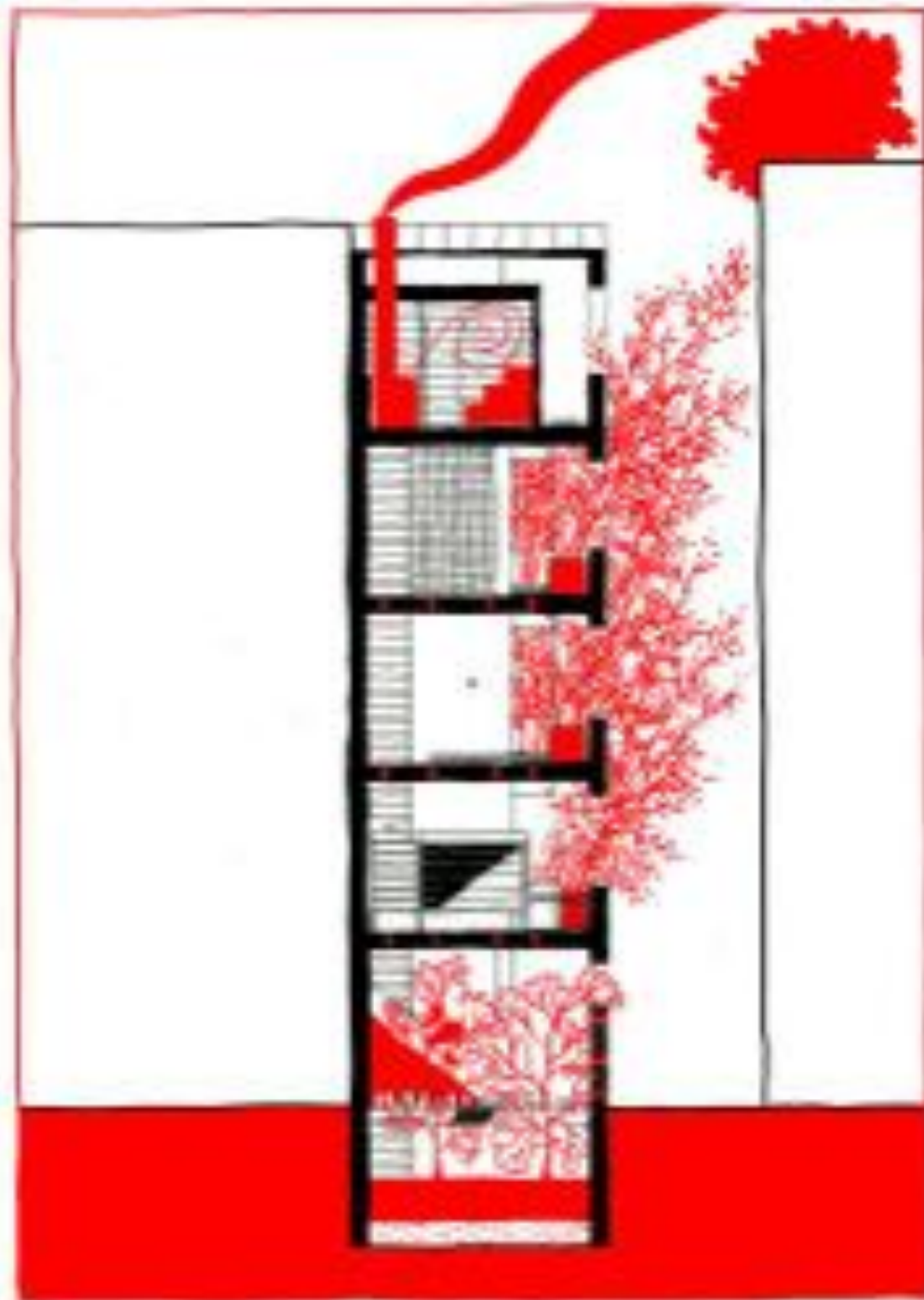








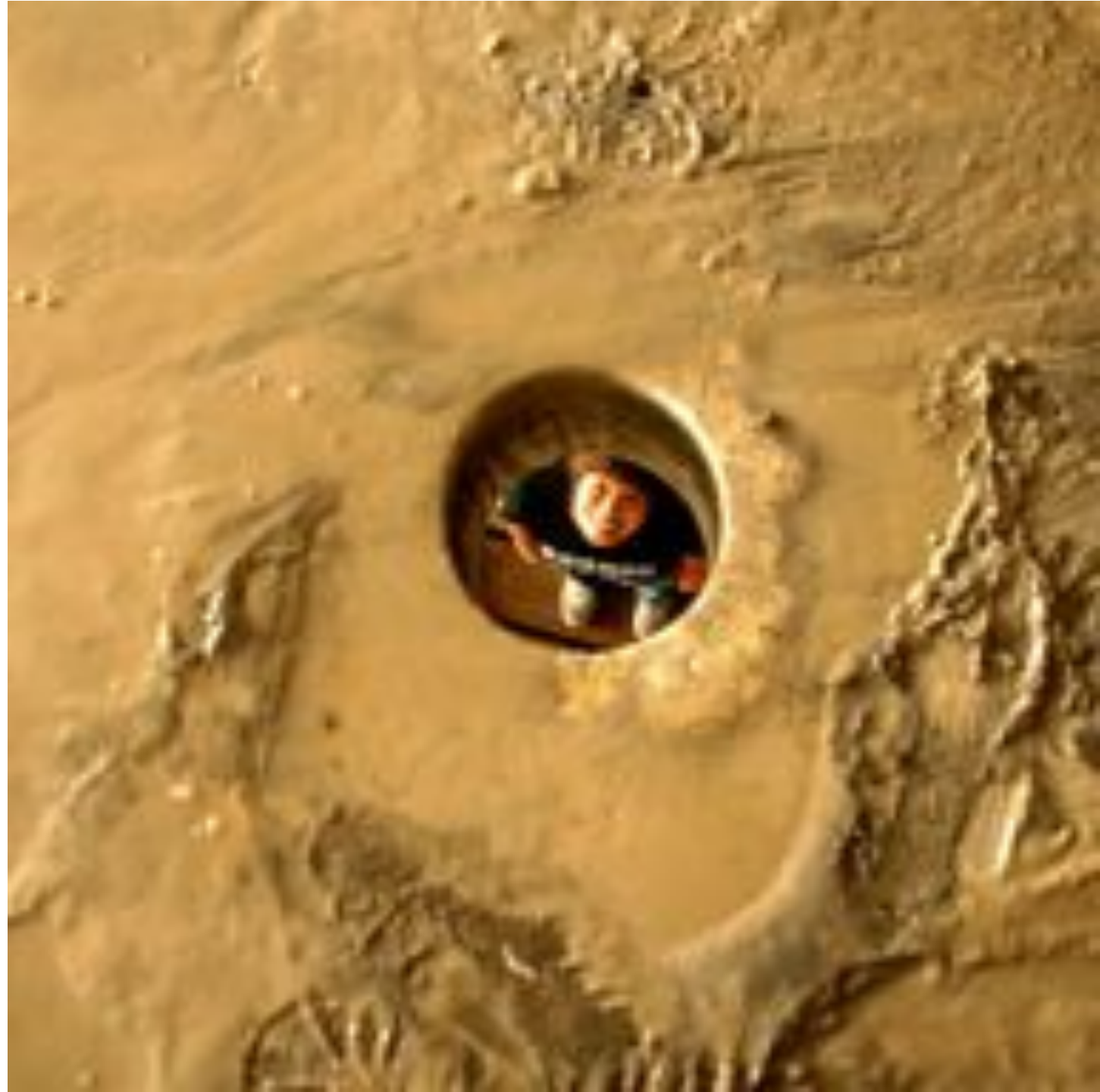


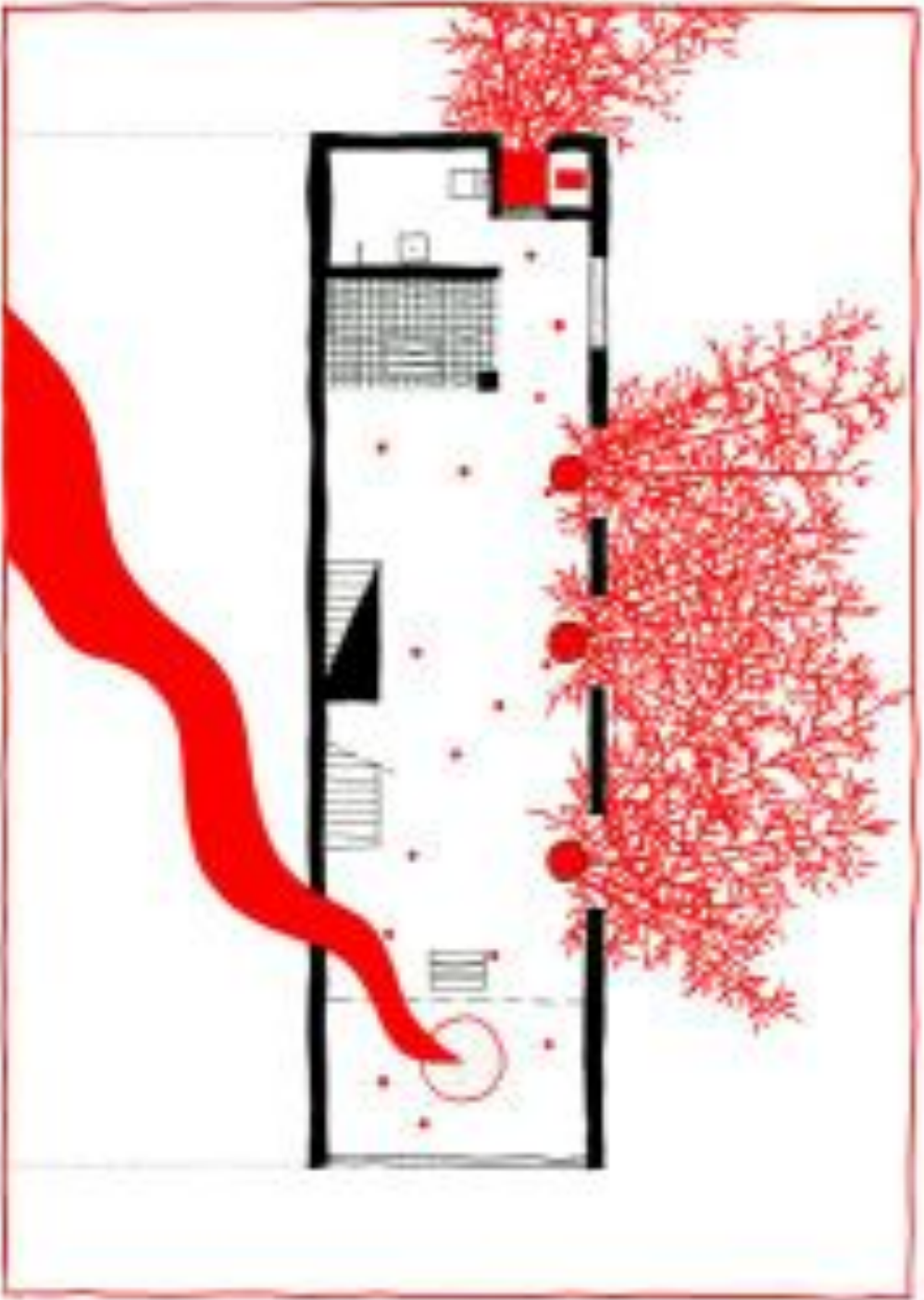


























































ILLEGAL ARCHITECTURE

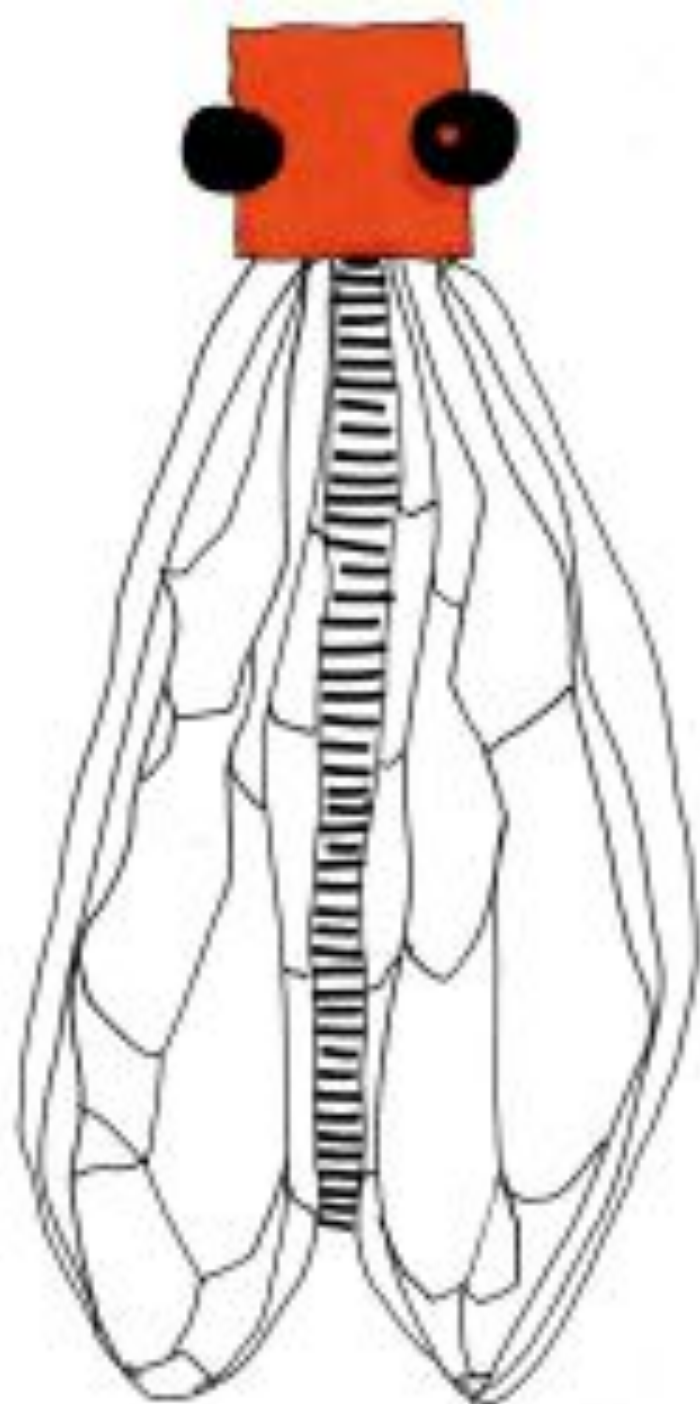
URBAN ACUPUNCTURE ... BIOURBAN ACUPUNCTURE

RIVER URBANISM

URBAN NOMAD

LOCAL KNOWLEDGE

• *ANARCHIST GRANNIES*





































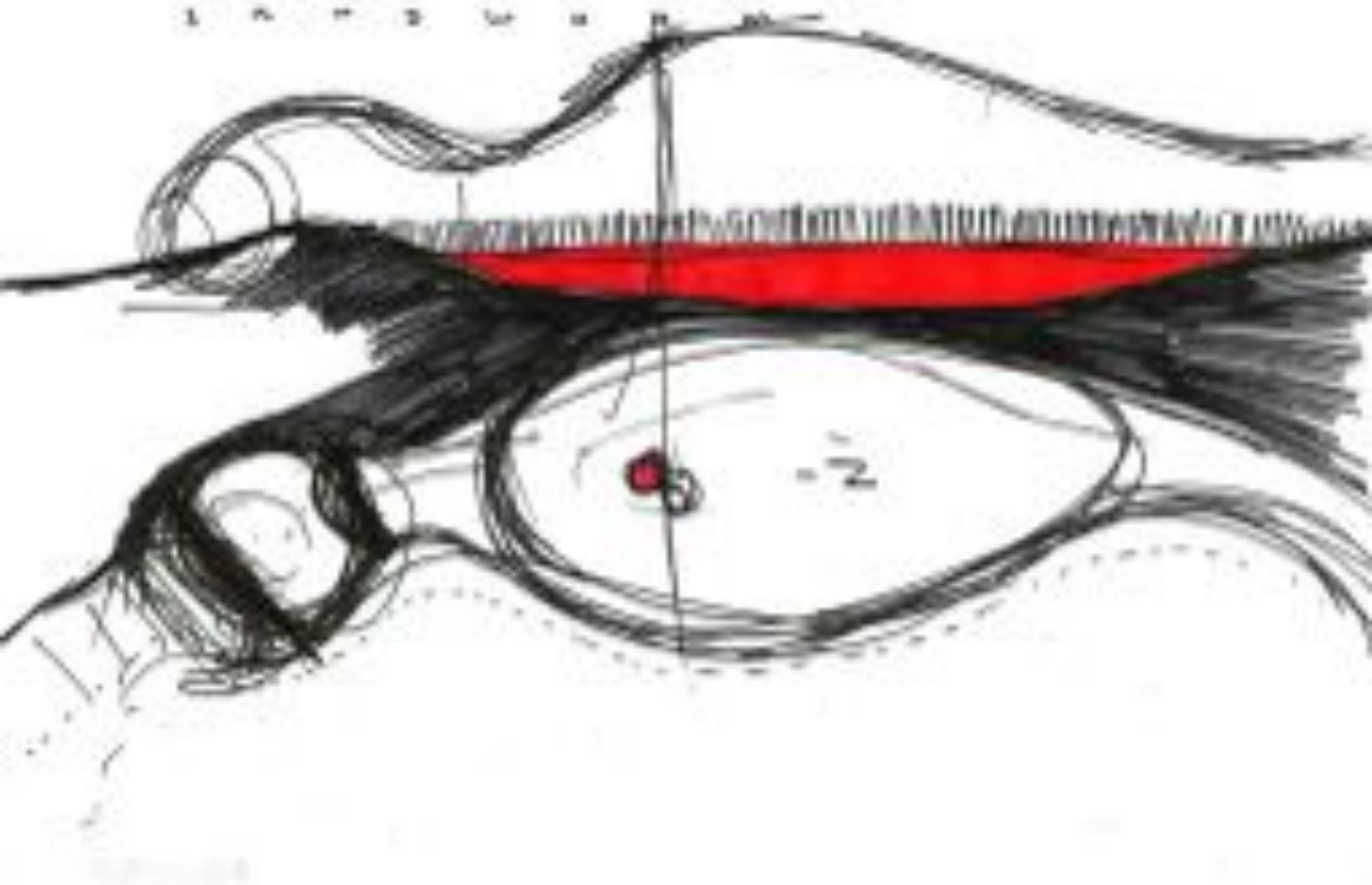








1 2 3 4 5 6







































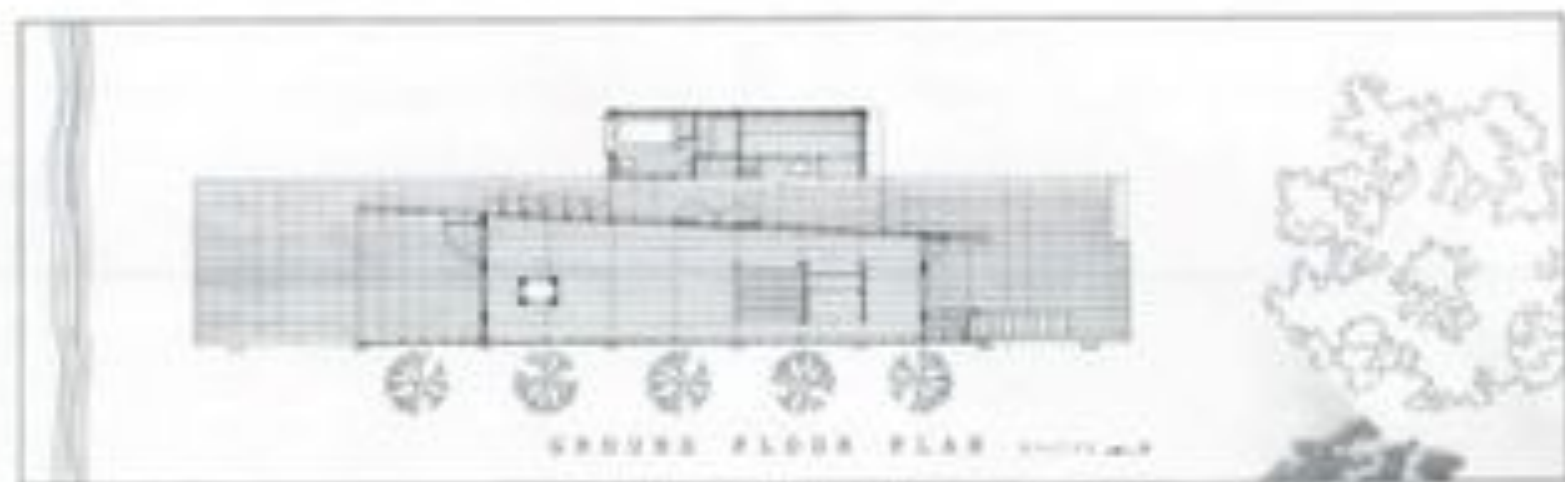






- 1. Main Road
- 2. Building
- 3. Pond
- 4. Ground Water Table

S I T E P L A N      S = 1 / 5 0 0      N





















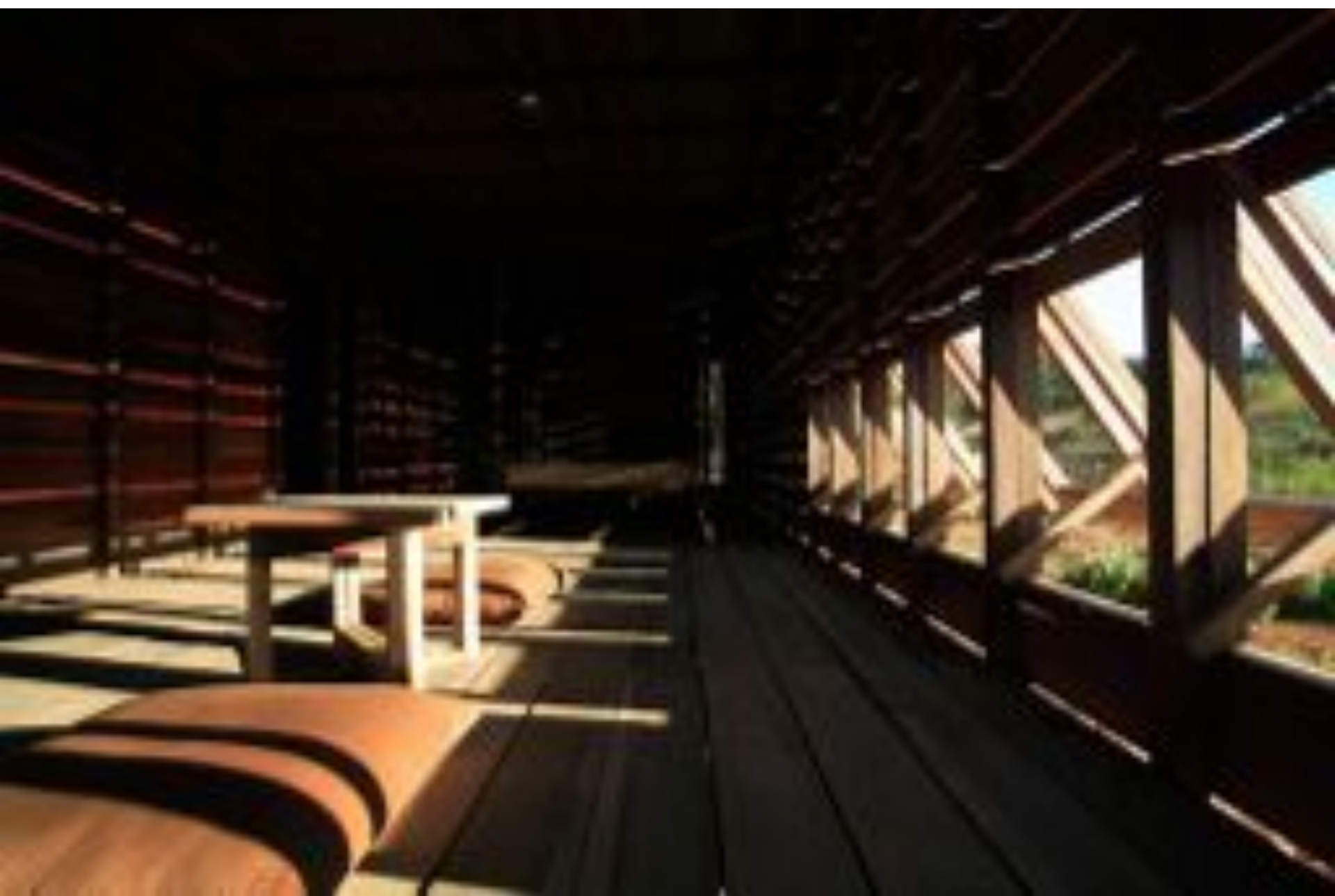






















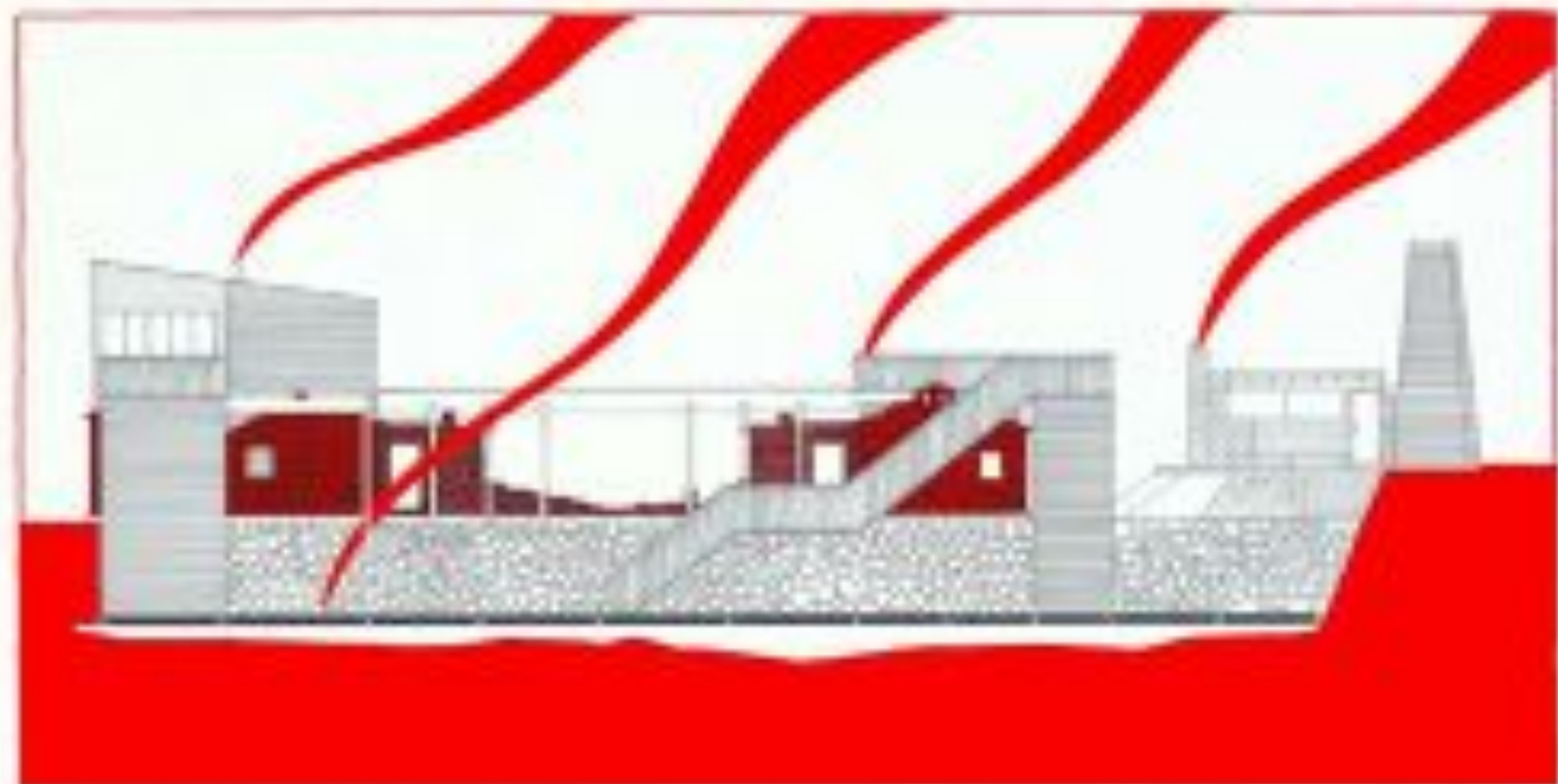








































































































THANK YOU!

[www.clab.fi](http://www.clab.fi)