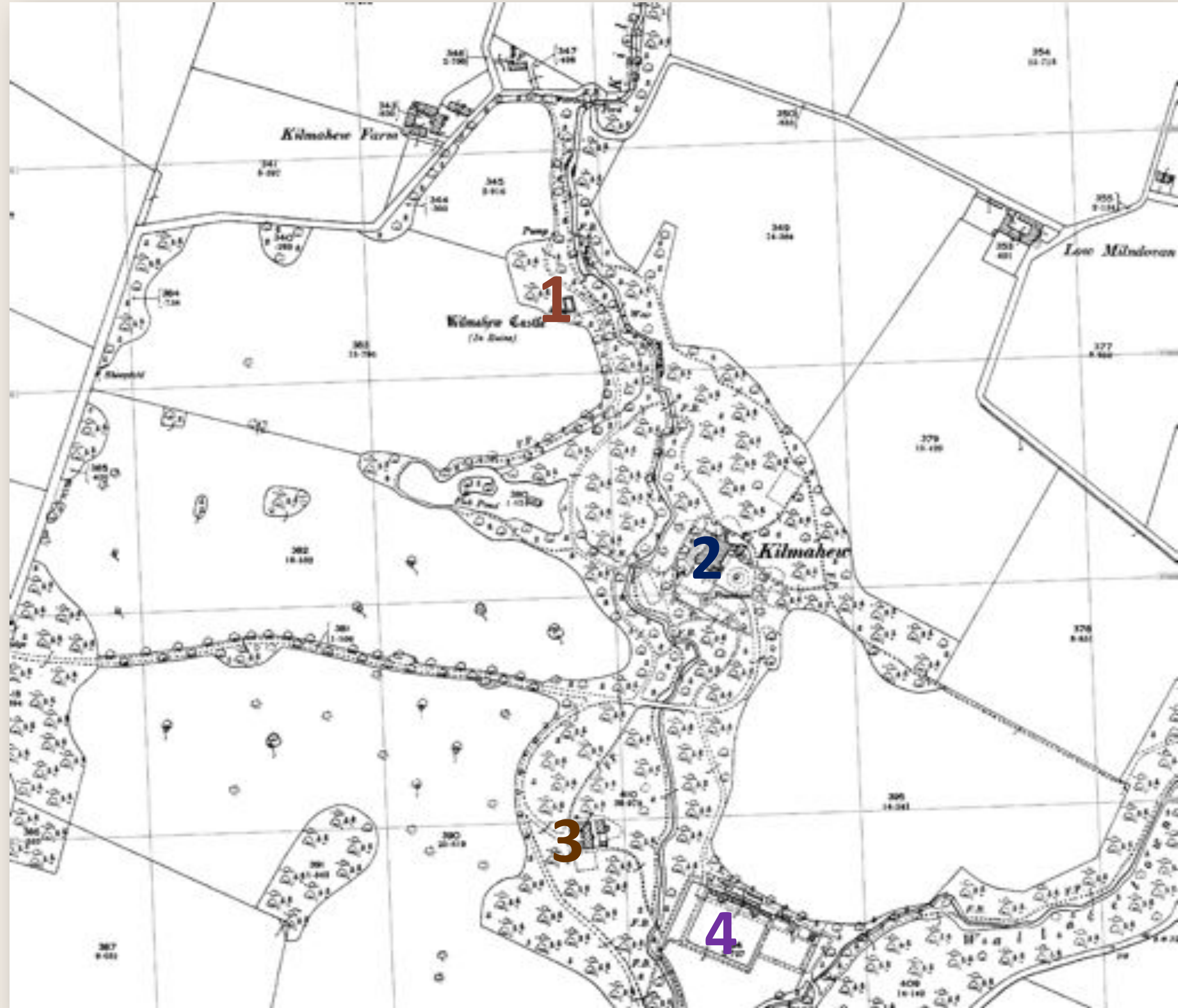


# Location



1. Kilmahew Castle (15<sup>th</sup> C)
2. Kilmahew House (1865-8)
3. Stables
4. Walled garden







*Kilmahew Castle*



*Kilmahew House*



# Seminary Buildings





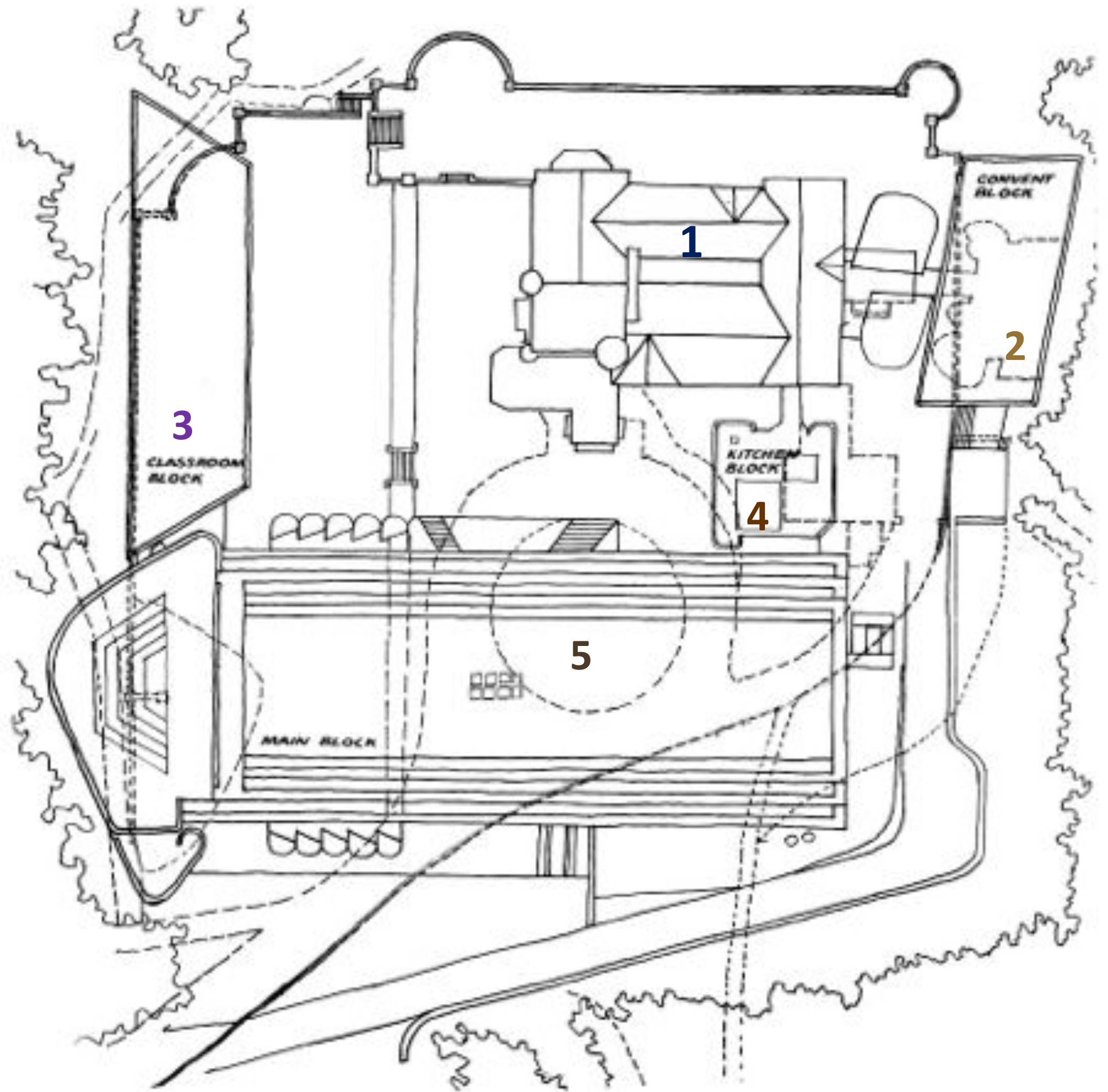
1. Kilmahew House

2. Convent

3. Teaching

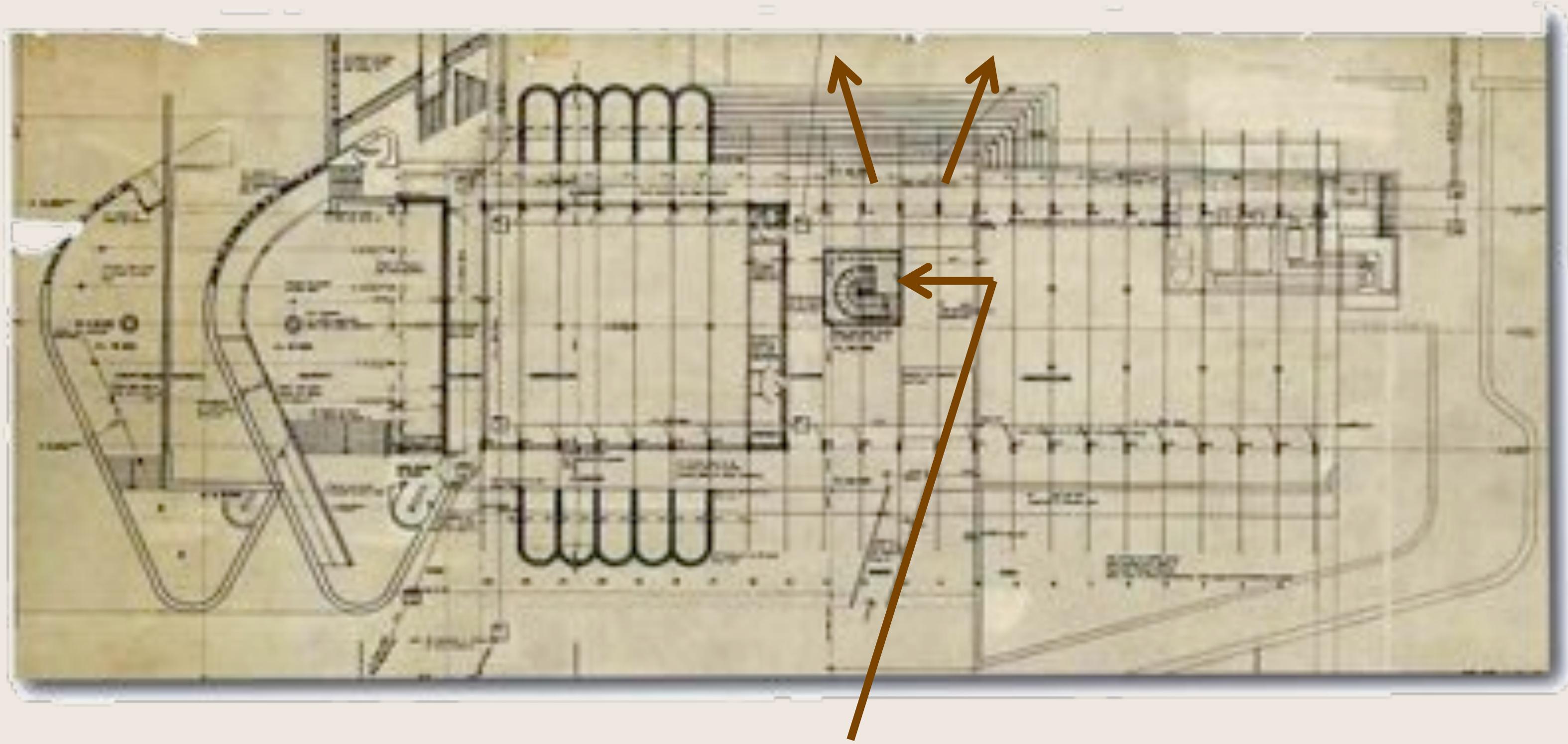
4. Kitchen

5. Seminary

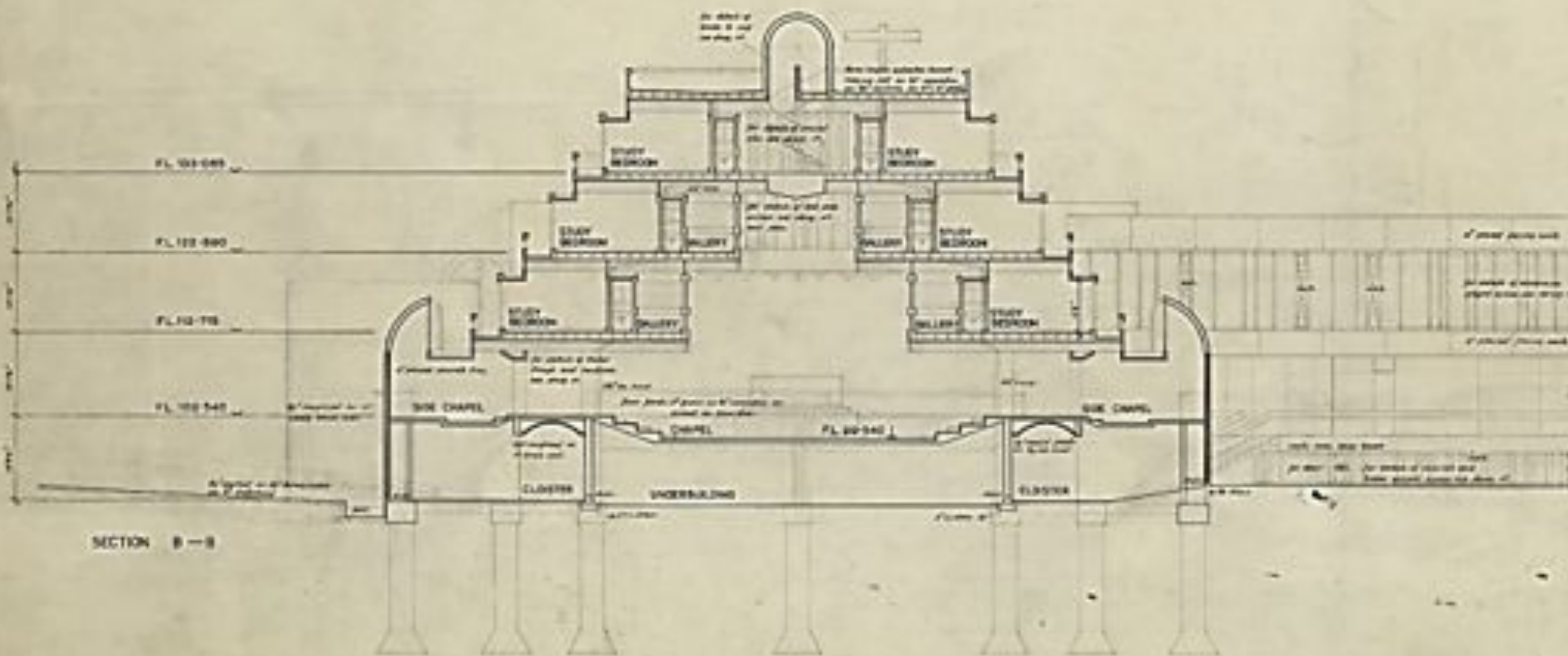




# Lower Ground Floor



entry via bridge



SECTION B-B





















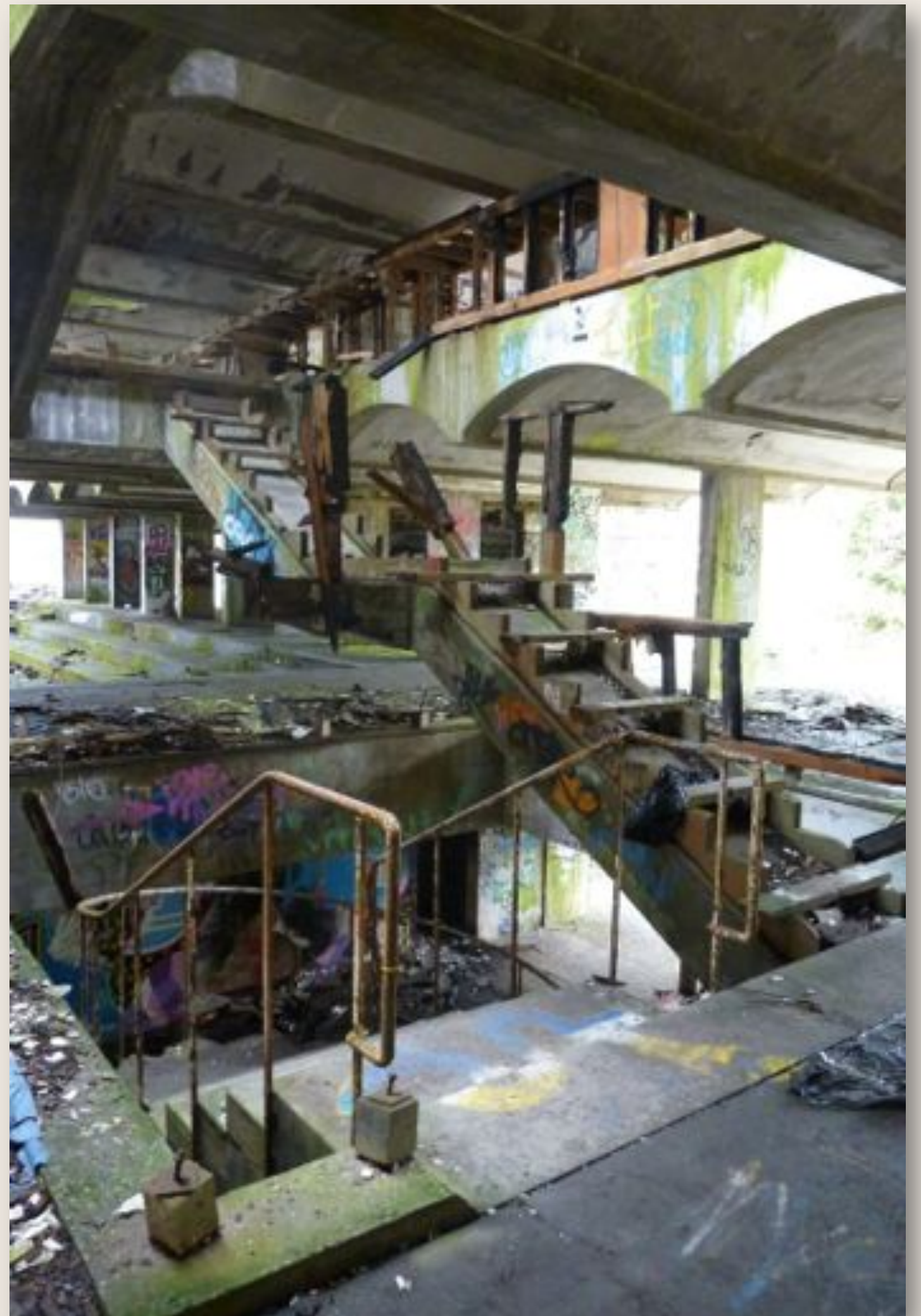




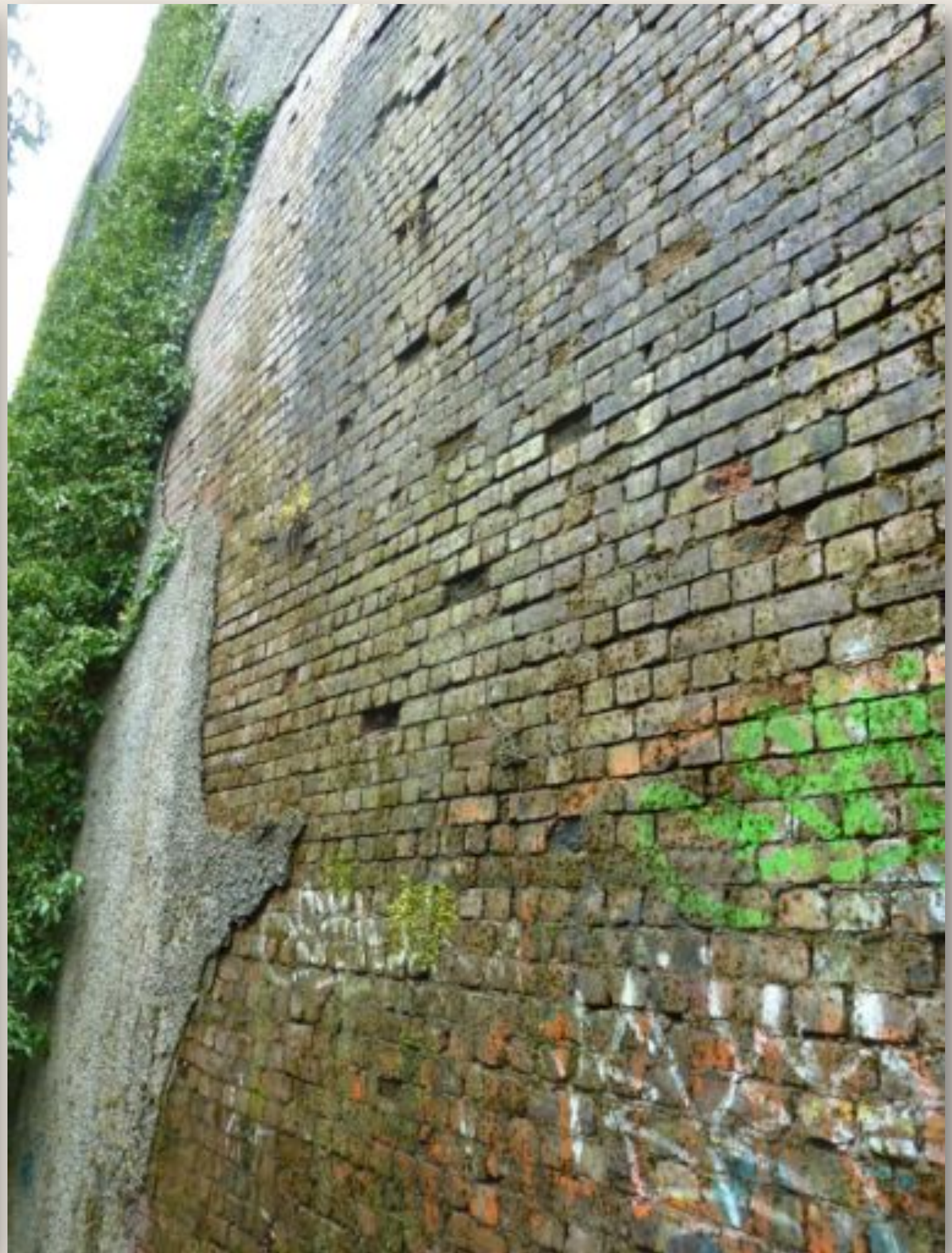














# Landscape as a cultural & heritage resource





# Business Model





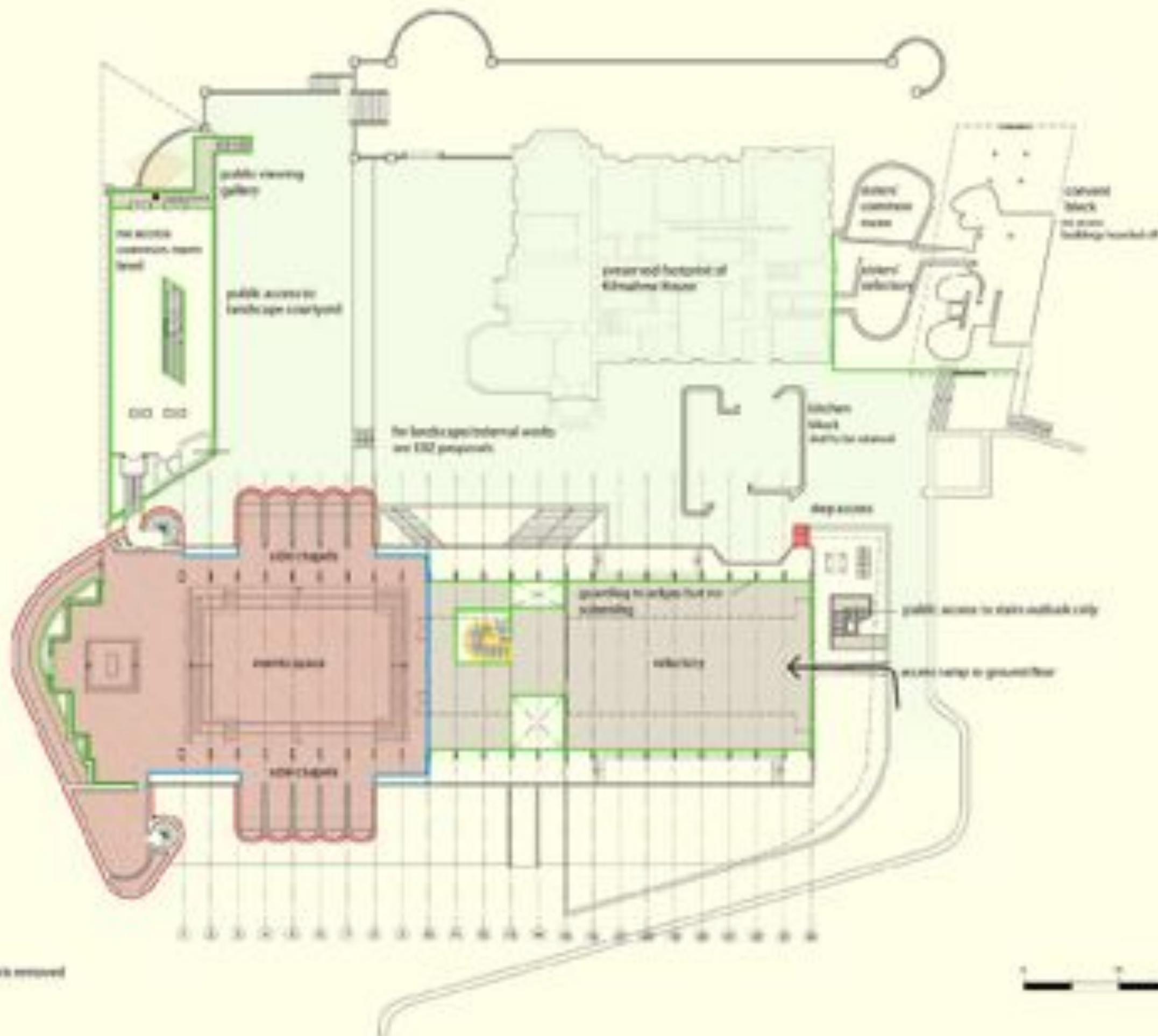


- KEY TO USES**
- Recreation
  - Temporary weather protection
  - Safety queuing/boarding
  - Reestablishment
  - My 15 minute safety assessed and made safe
  - Maintenance access/Storage (not for)
  - Public access
  - Storage
  - Weatheright events space

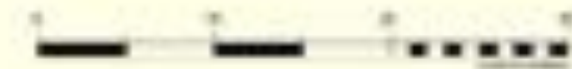
- Main Building 
- Chapel 
- External Escape Door 
- Common Block 
- Workshop Block 
- Kitchen Block 
- Intermediate Setting 



E. GROUND FLOOR PLAN 1:250  
 PHASE I WORKS

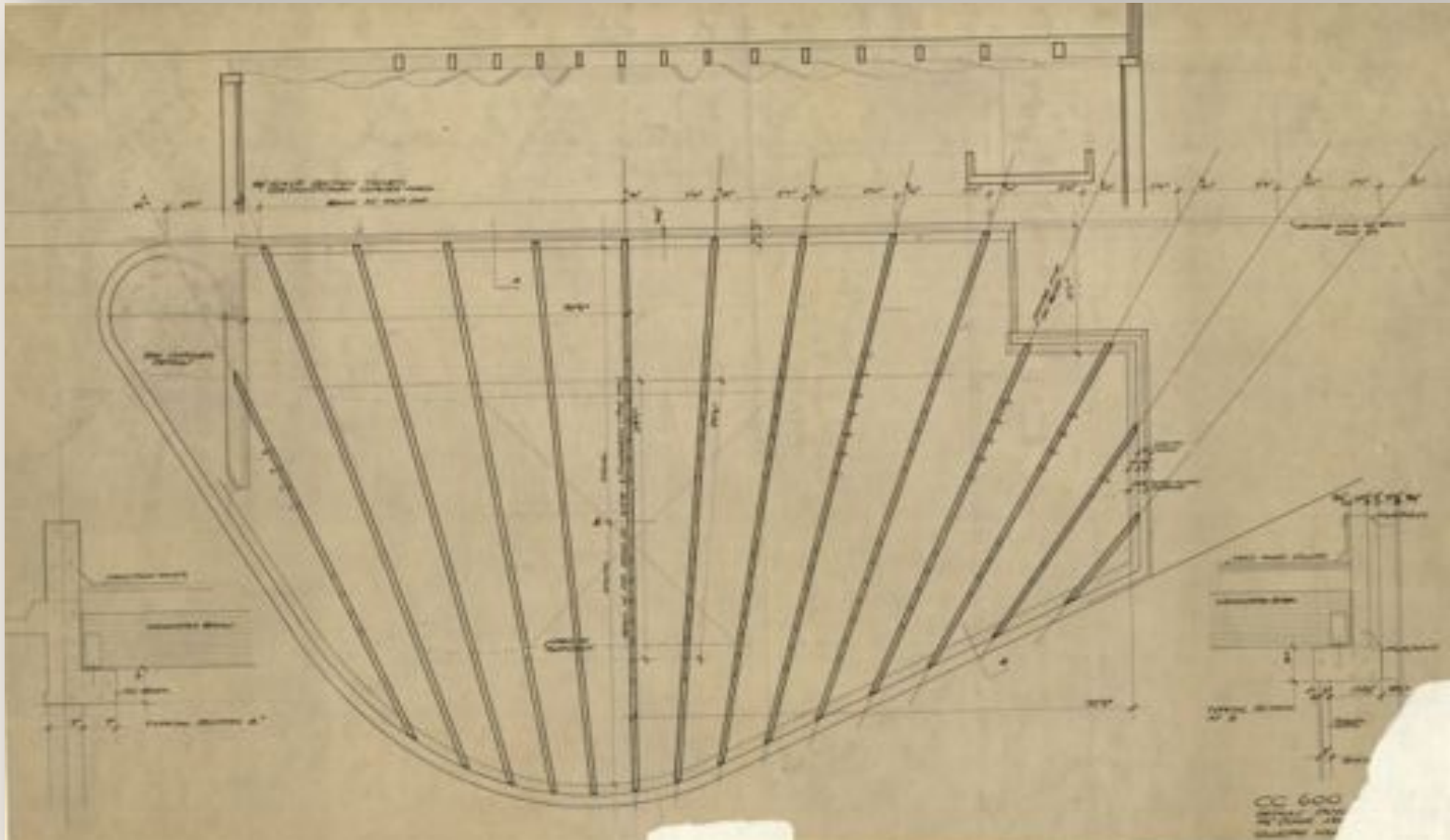
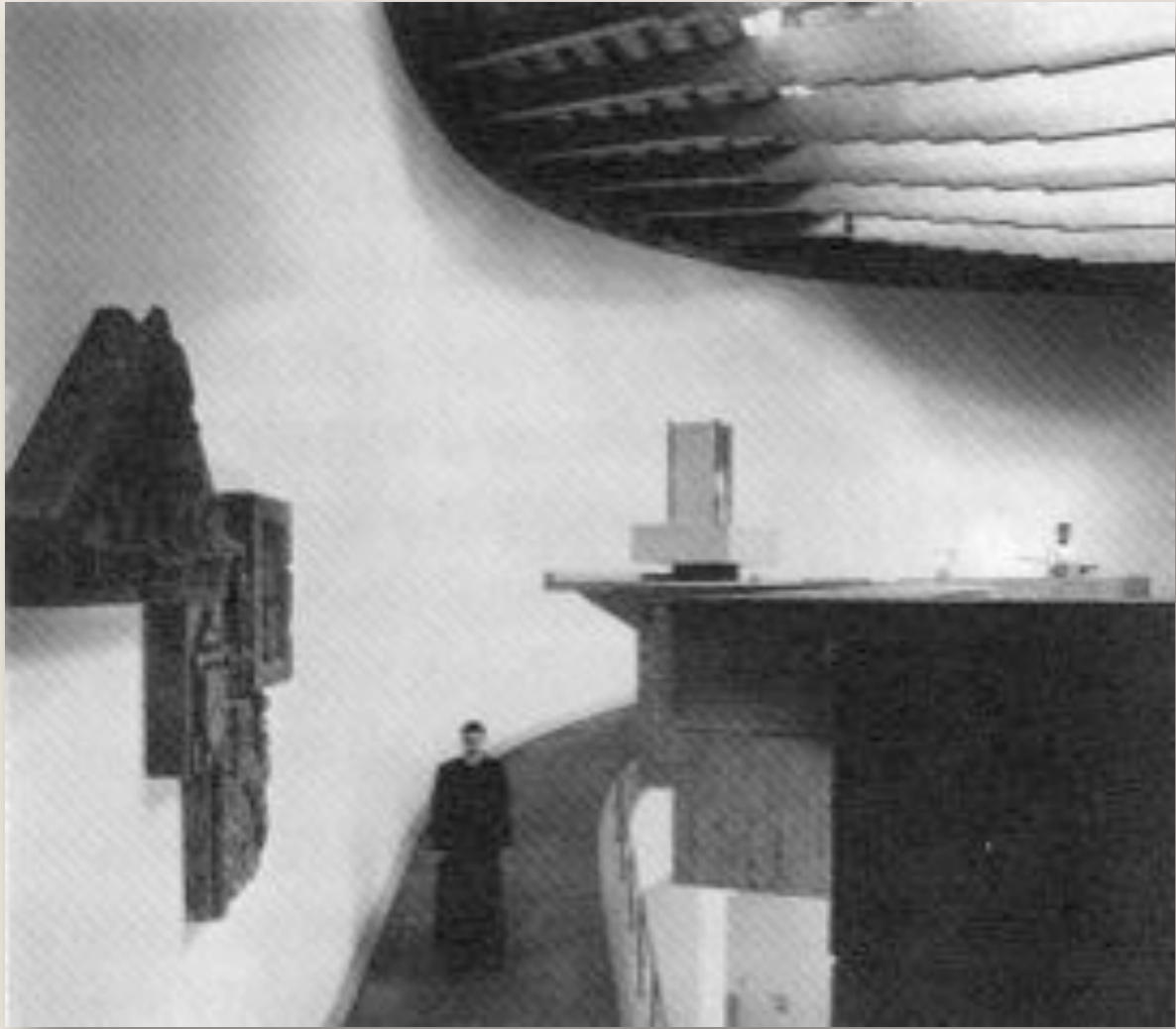


- Refurbishment
- Temporary weather protection
- Safety boundaries/fencing
- Refurbishment
- By 11th month - made safe and debris removed
- Public access
- Storage
- Event space



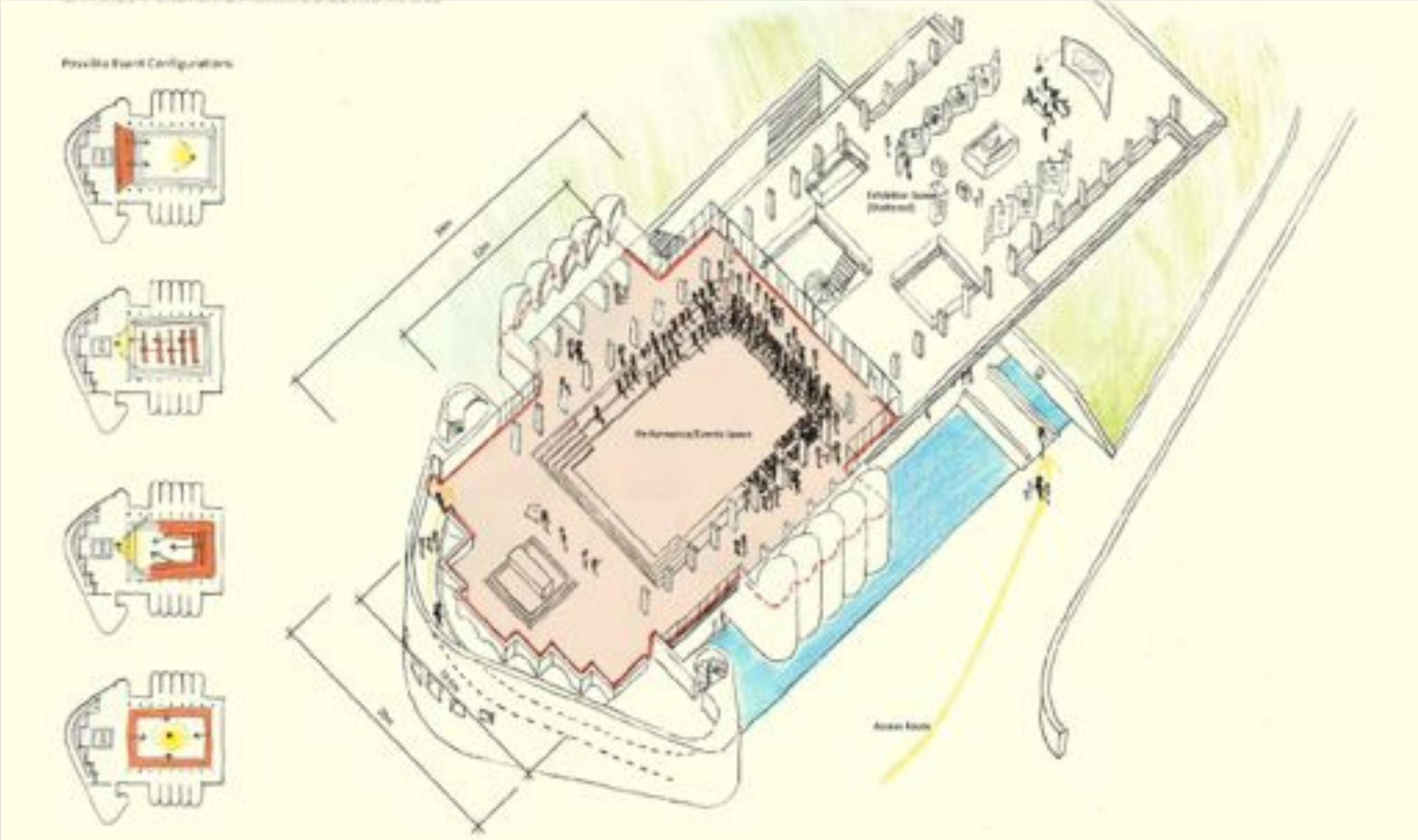


# Heritage details – sanctuary rooflight





# Building Use





# Construction strategy

## INITIAL WORKS CONSERVATION/CONSTRUCTION



## PHASE 1 OPERATION



- A. Serviced Shell/Event Space
- B. Raw Sheltered Space
- C. Outdoor Gathering Space
- D. Surrounding Landscape
- E. Areas off limits

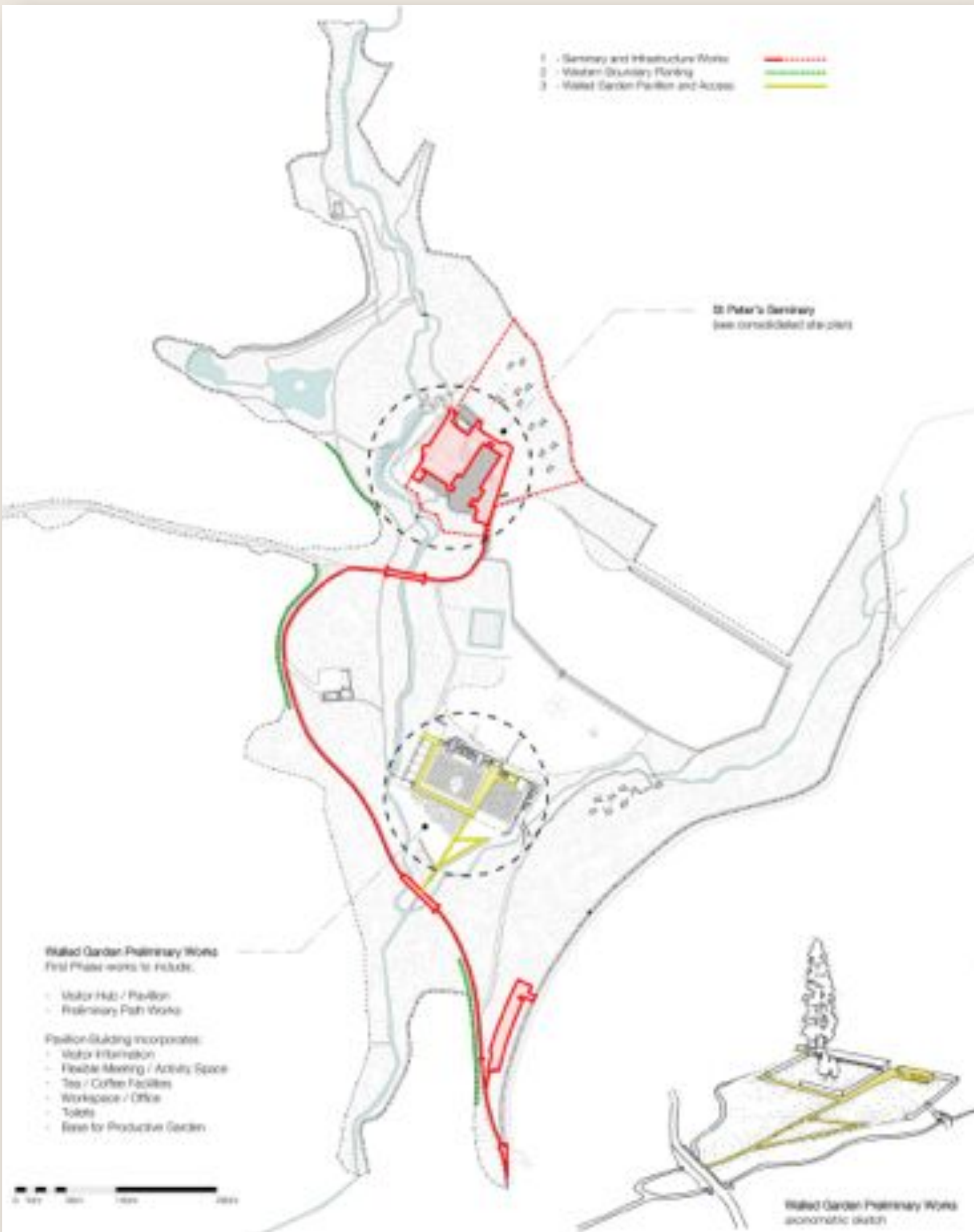




## MASTERPLAN

1. Kilmahew Castle
2. Whin dyke and waterfall
3. Swan Pond
4. Japanese Garden
5. Woodland Cabins
6. Seminary Complex
7. Western approach
8. High arched bridge
9. Former tennis courts / new moat
10. Upper meadow (flexible growing)
11. Lower meadow (camping)
12. Walled Garden complex
13. Low double bridge
14. Confluence of burns
15. Entrance / parking
16. Entrance portal
17. Carman Road
18. Stables Block (workshops and storage)





# Phase 1 Works











